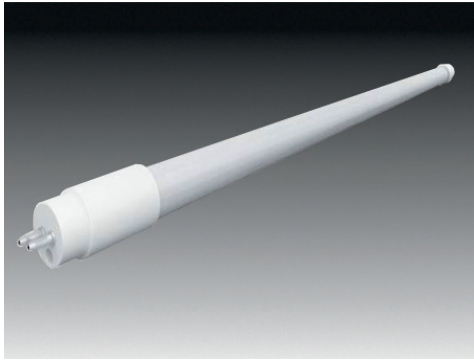


T5 & T8 LED Replacement Lamps

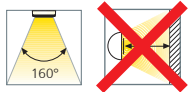


Replace Fluorescent Lamps without any Rewiring

These new LED replacement lamps are to be used to upgrade existing fluorescents to LED fixtures. It is a direct T5 and T8 lamp replacement with no wiring needed allowing for a quick and easy installation. Enjoy the benefits of LEDs such as immediate energy reduction, highly reduced maintenance, utility rebates and high, even light output.

Product-Features

- Multiple Lumen output options available
- Available in 3000 K, 3500 K, 4000 K and 5000 K
- Extremely long lifetime of 50,000 hours
- Good CRI > 80
- Suitable for use in fixtures where ambient temperature is between -4°F and 113°F
- DLC QPL Listed
- Quick and easy installation with no rewiring
- Emits virtually no UV rays or IR
- No mercury allowing for non-hazardous waste disposal
- Compatible with electronic ballasts only
- Limited 5 year warranty





What you'll need to buy

T8 LED Replacement Bulbs

Length	Color	Lumens	Watt	Code No.
24"	3000 K	1050	8	LRL/T8/24/3000
	4000 K	1050	8	LRL/T8/24/4000
36"	3000 K	1350	10	LRL/T8/36/3000
	4000 K	1350	10	LRL/T8/36/4000
48"	3000 K	1650	12	LRL/T8/48/3000/HE
	4000 K	1650	12	LRL/T8/48/4000/HE
48"	3000 K	1850	15	LRL/T8/48/3000
	4000 K	1850	15	LRL/T8/48/4000
48"	3000 K	2350	18	LRL/T8/48/3000/HO
	4000 K	2350	18	LRL/T8/48/4000/HO

*Note: 8' T8 LED replacement lamps available. DLC does not offer a standard certification for this length.

T5 LED Replacement Bulbs

Length	Color	Lumens	Watt	Code No.
46" HE	3000 K	1900	15	LRL/T5/46/3000/HE
	4000 K	1900	15	LRL/T5/46/4000/HE
46" HO	3000 K	3200	24	LRL/T5/46/3000/HO
	4000 K	3200	24	LRL/T5/46/4000/HO